



Quality solutions for spare & wear parts

SPARE & WEAR PARTS FOR EXTRUDER

With more than 12 years of experience in the extruder sector, we can supply you with almost any solution in the area of Spare & Wear Parts for all manufacturers of extruders.

Starting with the main wearing parts, such as screws, barrel, liner, shafts and die plates, up to various other wearing parts we do offer you different material solutions but also the reconditioning of your old barrel.

If required, service assemblies are also possible at your site.

Based on our experience, we have managed the engineering of NON-OEM parts for a well-known OEM manufacturer and designed and optimized more than 500 components over the past 3.5 years.

The tasks included the mentioned engineering, production planning and implementation. The manufacture of certain components was added later.

Your Inquiry

Do you regularly require spare & wear parts for your extruder? We will supply these to you! What we need are some information about your machine and the spare parts numbers you require.

We then will check our system whether we have already manufacture parts for your machine.

If this is the case, an offer can be prepared for you.

In case of an order, your components will be checked with our drawing by an engineer, in order to avoid any surprises later.

If not, we will make measurements of your parts.

In both cases, the control / measurement is carried out with the most modern 3D laser measurement systems. This service will be free of charge.

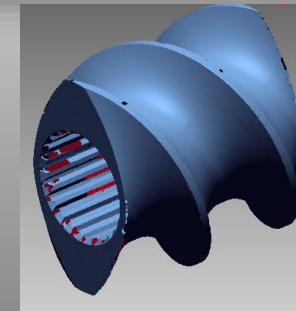
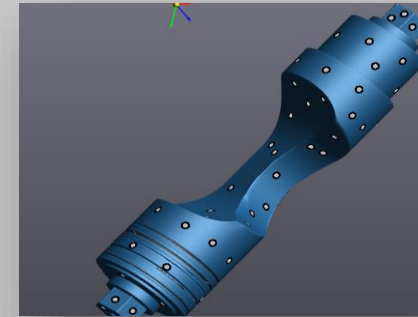
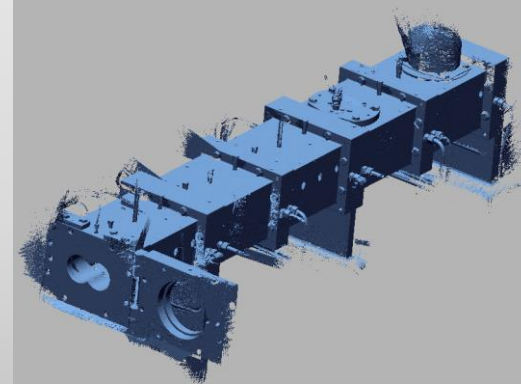


The Control & Measurement

As already mentioned, we measure (scan) your components with modern laser scanning systems.



This process enables us to carry out highly accurate measurements with a very low risk of errors in the shortest possible time. (compared to a manual measurement)

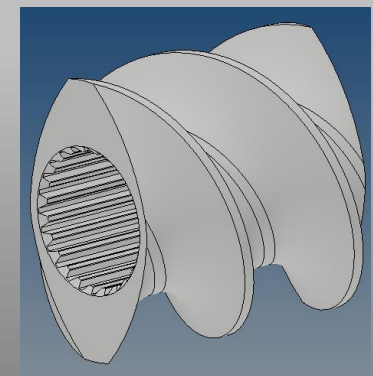
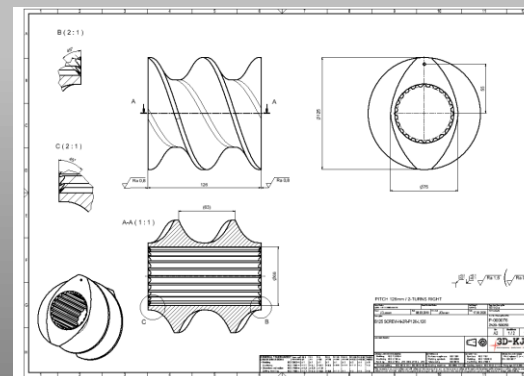
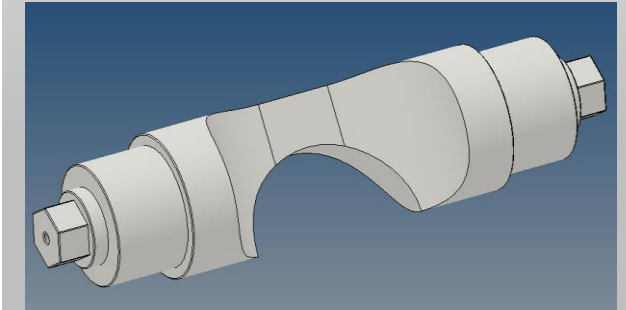
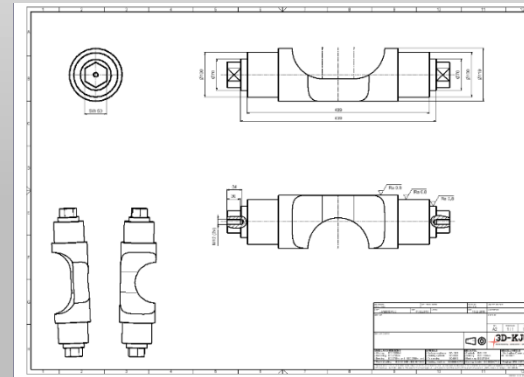
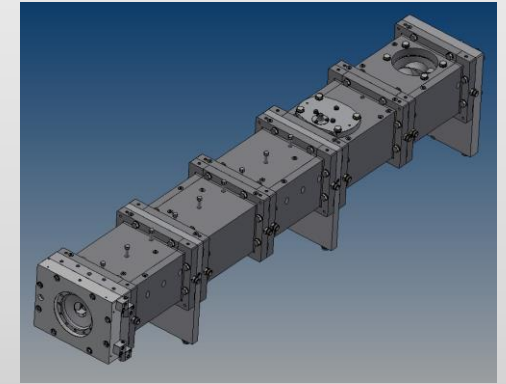
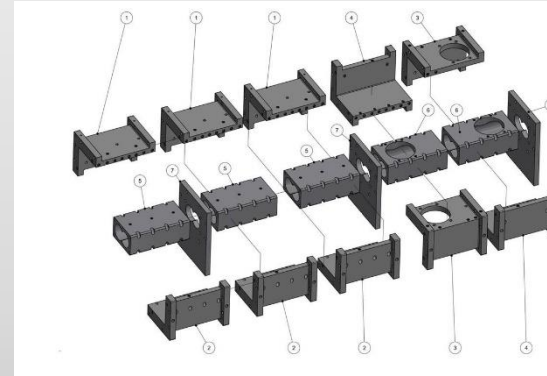


The Construction

After the measurement, the construction takes place based on the measured components.

All components are idealized, created as a single part CAD model with the associated drawing.

The required hardness and material will be fixed in the construction. We are capable of caring out material analyzes and test the hardness.

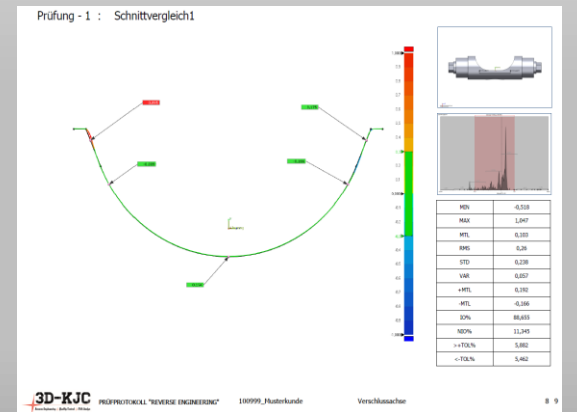
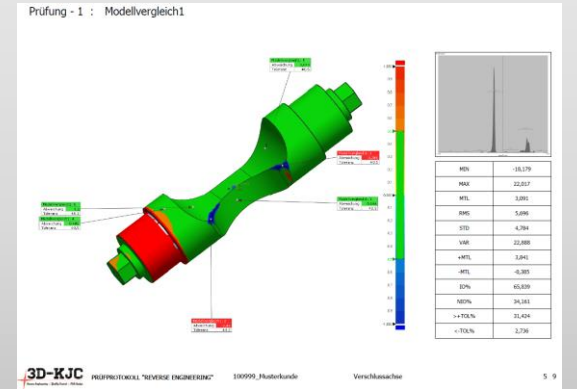
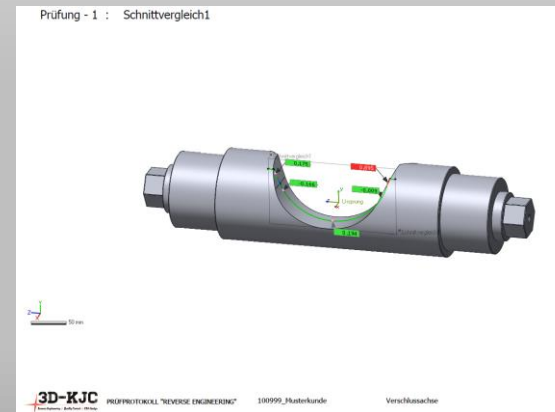
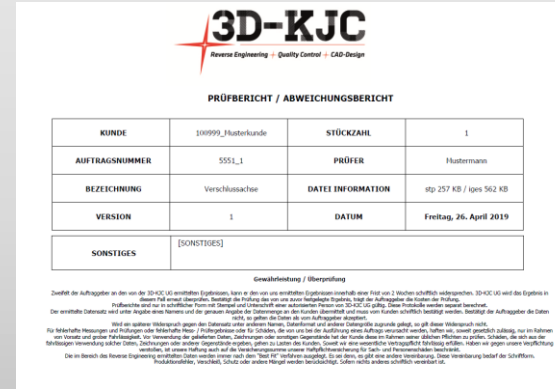


Deviation Control

After all work has been completed, we prepare an internal control report.

The internal control report will be used to compare the CAD model against the measurement of your part.

Should there be something wrong, we will immediately find out and if necessary, discuss this with you.

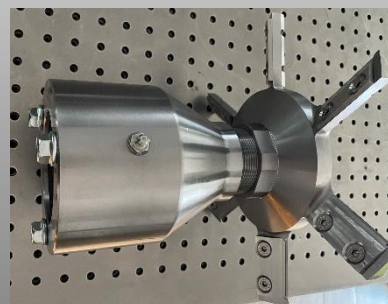
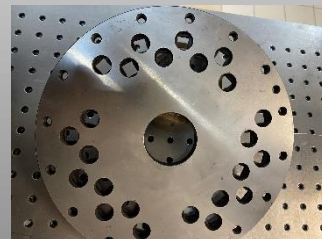
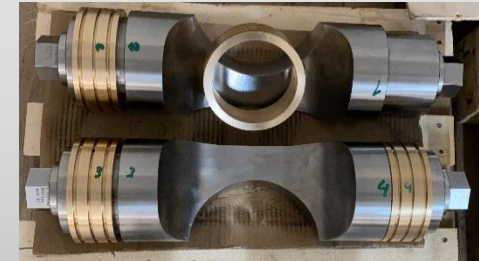
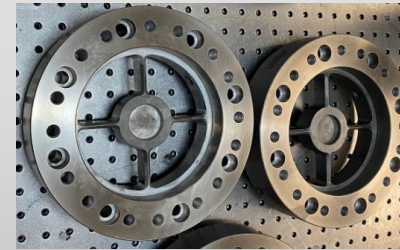


Production

We can manufacture almost any size of component.

From a single part to a serial part.

Just according to your requirements.



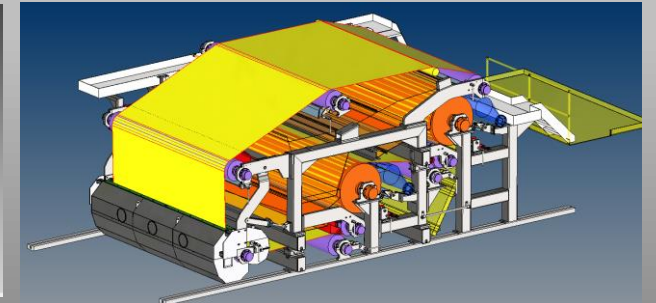
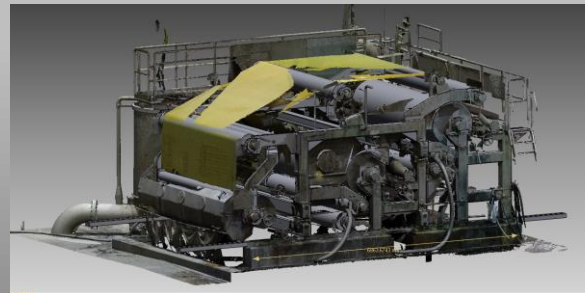
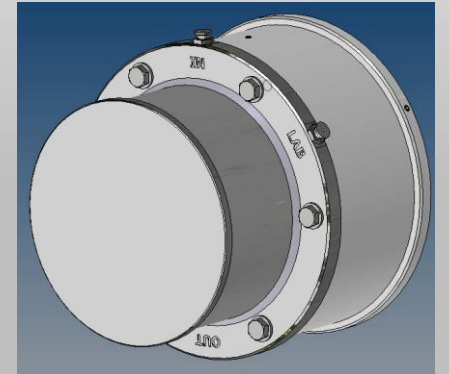
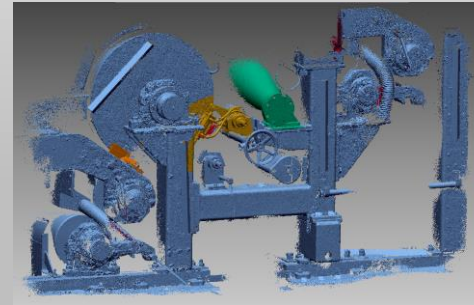
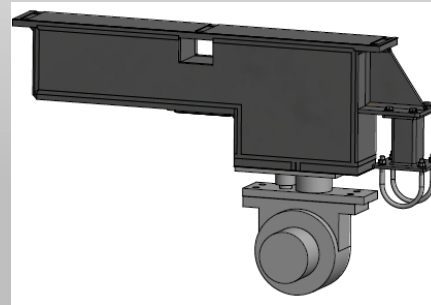
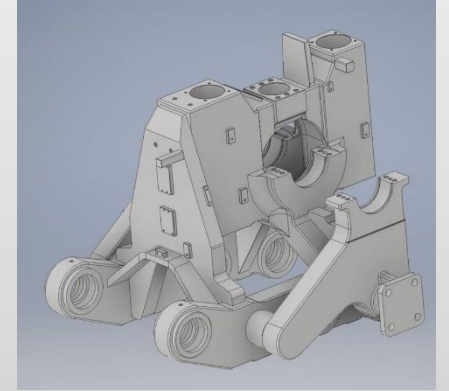
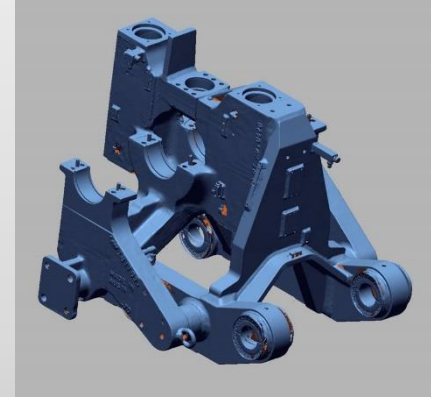
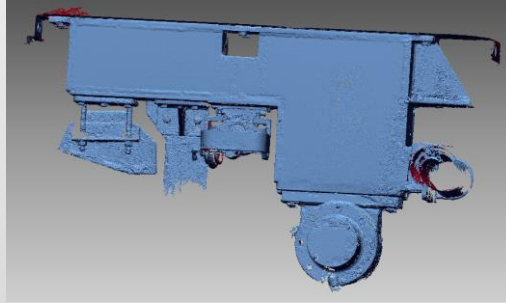
Disassembly & Assembly at your plant

If required, we would be able to do disassembly & assembly at your plant



Others - Models

- Thanks to our extensive KNOW HOW, we are also working in other areas of the industry.
- We even can digitize entire industrial plants.





Quality solutions for spare & wear parts